

**Brilliance
without limits.**



Witness the stunning colour performance of
e-STUDIO colour multifunction printer.

e-STUDIO3040CSE/3540CSE/4540CSE

Colours so lively, they jump.



Ever been mesmerised by the brightly coloured red-eyed tree frog?

These little creatures have met their match.

The Toshiba **e-STUDIO colour multifunction printer** is yet another talented artist. Rely on it to deliver the most impressive colour performance for all your office needs, and expect stunning results time after time.

Witness the brilliance of high-quality colour.



Made from 100% Elemental Chlorine Free (ECF) wood pulp, sourced from carefully managed and renewed forests.
This paper is 100% recyclable.



Toshiba has now added the e-STUDIO3040CSE/3540CSE/4540CSE to its colour MFP lineup. e-BRIDGE, the system controller and heart of the Toshiba MFPs, has evolved to a new level. The new version is based on Linux. Its system architecture has been reconstructed, offering many new benefits for you, including connectivity with other systems, simplified customization, and improved response speed, system serviceability, and maintainability.

The newly designed architecture, not only permits connection to a client PC but also allows it to be easily connected to a management system network. It also permits the use of role-based access control without additional investment in a server. An administrator can easily and comprehensively manage both printing costs and security by adjusting all users' access rights. And administrators can now clone the device settings whenever a new MFP is added, upgrade software, change settings, and perform many other tasks which formerly had to be done by service technicians. These improvements enable users to carry out more flexible and timely system management.

Toshiba's new e-STUDIO4540CSE series inherits the high reliability, durability and beautiful image quality that are traditional features of Toshiba MFPs, while providing new emphasis on network compatibility, ease of management, and improved environmental performance. These user-friendly MFPs make operation easy through Human Centric design and integrate features that meet wide-ranging needs both now and in the future. Moreover, Toshiba strengthened performance in the seven key areas to streamline network connectivity and device management.



READY FOR INTEGRATION

An advantage of the e-STUDIO4540CSE series is that these MFPs can be easily connected to a network. When MFPs are connected with corporate networks, they serve as an important part of the business workflow. The e-STUDIO4540CSE series fully display its true value as a network MFP not only when linked to your PC, but also when connected to an accounting workflow systems or work systems.

- ▼ With an advanced version of Toshiba's **e-BRIDGE Open Platform** that simplifies links between the e-STUDIO MFP series and value-added solutions, you can easily achieve smooth integration into the related applications. This allows you to streamline processes, improve efficiency and productivity.
- ▼ The Meta Scan function allows easy support for Meta Data (XML) that helps streamline the workflow by allowing connectivity with external systems and applications.
- ▼ The **e-BRIDGE Re-Rite** with e-STUDIO provides the attractive document capture solution to you. You can easily convert the large stacks of paper documents to electronic documents, or find the desired document by keyword search. You can reuse the paper documents as the electronic document such as MS WORD or EXCEL.
- ▼ Toshiba's **new printer driver** feature gives you the convenience of installing just one driver that comes with both PCL and Postscript language, which previously two different drivers are needed for installation. In addition, you can include plug-in tags for commonly used print applications, such as Job Build or Job Separator onto the same printer driver.



COMPREHENSIVE MANAGEMENT

The e-STUDIO3040CSE/3540CSE/4540CSE provides more flexibility in terms of user management, security management and even device management. This significantly reduce the time and trouble spent on initial set ups and installation.



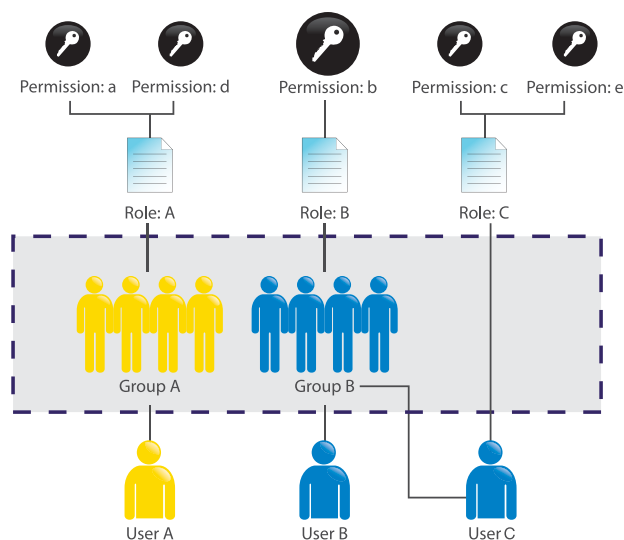
Toshiba has introduced the **Managed Document Services (MDS)** to streamline entire document and print process, which includes data capturing, document archiving, document workflow, data security and environmental management. You can rely on Toshiba MDS for devices that print, copy, scan, fax and the maintenance of printers as well as management of consumables. The full operating costs incurred in printing and document infrastructure will also be tracked across the organization.

With this enhancement, you will enjoy dedicated pro-active account management, output management solutions, enhanced security, consolidated billing services, green-office advice and the convenience of a single point of contact.

The Role Based Access Control (RBAC) function accurately monitors individual or group usage. You can easily access to personal template through a single touch of MENU key function. RBAC also reduces unnecessary expenditures through flexible control of functions usage for all users, including guests.

The new version of **e-BRIDGE Fleet Management System (EFMS)** allows you to have consolidated management of e-STUDIO and other 3rd-party output devices in your office. User convenience is enhanced. You can use EFMS with a web browser on your own PCs instead of installing the software. You will be able to monitor and measure almost everything with regards to device usage or consumption in order to provide timely notifications on current and potential device disruptions.

Another useful feature is the **Alphanumeric characters to department code** that allows you to register the same name to both department code and name, which previously had to be done separately.



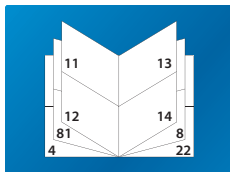
HIGH QUALITY PERFORMANCE

The e-STUDIO4540CSE series offers users high quality performance based on the high reliability and attractive functionality. With Toshiba's advanced image-processing technologies users can enjoy beautiful print quality.

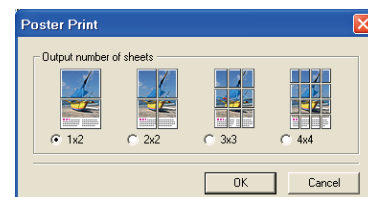
The e-STUDIO4540CSE series has **PostScript overprint** function which allows user to get printout similar to production print. Using the CMYK overprint feature of the e-STUDIO4540CSE series, it is possible to print documents set to overprint in a form close to actual printing. This feature can be used to confirm the effects of overprint or incorrect settings before actual printing, avoiding trouble during printing and improving work efficiency.



The e-STUDIO4540CSE series provides new finishing functions. These allow user to make attractive documents easily.



- 2in1 magazine sort** - you can make a booklet document including 2in1 form such as handout of a presentation file.



- Poster print** - you can create a large size printout by separating print images into some pages, for checking draft poster at the same size or making large size output easily.

ECO CRYSTAL

Natural Waterproof Glossy Paper

ECO CRYSTAL redefines paper with its waterproof design and strong resistance to fading and curling. Made from natural materials, it provides all the safety and eco benefits of regular paper while delivering greater durability than laminated paper. It's the ideal choice for indoor/outdoor signs, posters, POPs, ID cards, restaurant menus and more.

Stunning colour and stability
make it perfect for e-STUDIOS.



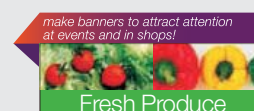
Waterproof design
enables wide-ranging indoor and outdoor applications.



Durable construction
prevents colour deterioration as well as curling and tearing in direct sunlight and freezing temperatures.



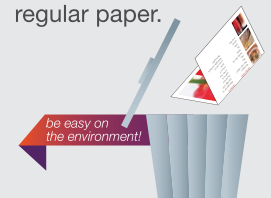
Banner size variations
make it easy to create attractive banners and capture viewers' attention.



Premium gloss
on both sides ensures highly appealing dual-sided printing results.



Eco-friendly material
is recyclable and can be discarded just like regular paper.



ECO-EFFICIENCY

Toshiba has developed many of the world's leading technologies for conserving energy and protecting the environment. The e-STUDIO series are designed to satisfy the latest energy conservation standards. The e-STUDIO4540CSE series is friendly to users as well as the environment as it conforms to the newest test criteria set forth in **Energy Star** Version 1.1.



- ▼ Power consumption during sleep mode is as low as 5W, contributing to an outstanding Energy Star TEC value.
- ▼ Recycled materials are featured and materials harmful to the environment are minimized.
- ▼ The power switch cover is made of biomass plastic.

ACCELERATED PRODUCTIVITY

The e-STUDIO3040CSE/3540CSE/4540CSE includes a lineup of five models ranging in speed from 30 to 45 sheets per minute for the colour MFP mid-range market. This range of speeds lets you maximise investment efficiency by choosing the model best suited to their performance needs.

The greatest advantage of this series is its total speed from information input to output. For example, it can improve work-flow of scan capacity up to 57spm in the conversion of data to PDF.

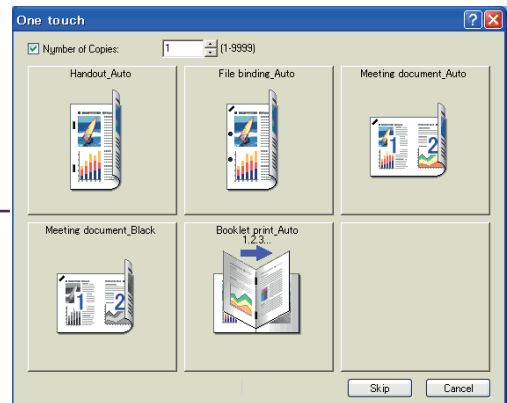
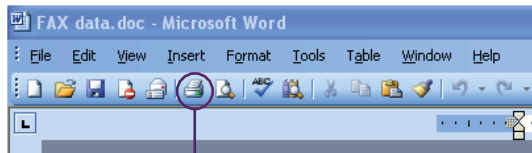
The **Tandem printing** feature permits the division of a print job between two MFPs to reduce printing time. Now you can complete a large printing job quickly, simply by distributing a printing job between two e-STUDIOS on a network.

With the **Gigabit Ethernet** interface, you can enjoy quick transfer of data between the e-STUDIO and other devices.

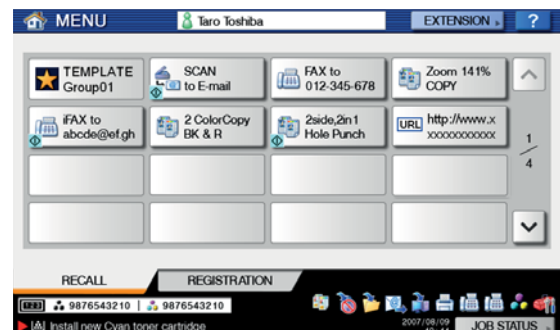


OPERATIONAL SIMPLICITY

The e-STUDIO4540CSE series offers an improved user interface that allows you to operate the MFP easily and more comfortably. With the new One Touch Print Template, you can set your printer drivers settings in a graphical manner, which displays the print image at a glance. When a print command is issued by an application, a one-touch template screen can now be displayed without opening a driver.



The conventional MENU screen does not allow you to customize it but the new e-STUDIOS allow you to flexibly customize the MENU so that you can have shortcuts to Template Button or to Template Group, and register the URL to Embedded Web Browser (EWB).



The large 8.5-inch colour touch panel features large icons for a clearer view. This new, easy-to-use interface incorporates numerous refinements for all-round operating ease.



Documents inside the e-filing box, which were formerly displayed only by file name, can now be displayed as thumbnails. This makes it possible to view the e-Filing documents by **Thumbnail** image. Now you can find your desired document easily.



Preview function makes it possible to check the scanned image instantly on the control panel. You no longer need to return to your PC to check the scanned data. If necessary you can redo scans at the e-STUDIO. In the e-STUDIO4540CSE series, this function became available on the **Scan and FAX functions**. In addition, you can replace, add and delete a page on scan preview function.



The e-STUDIO optional **Job Replicator** provides carbon copy function. You can easily make the carbon copy documents such as invoice and receipt by placing normal copy papers and coloured copy papers in separate drawers. The main sheets are output using normal white copy paper, while the carbon copies or duplicates are generated using coloured paper. This approach eliminates the need to purchase expensive specialized stationery, software or install impact printers.



SECURITY MADE EASY

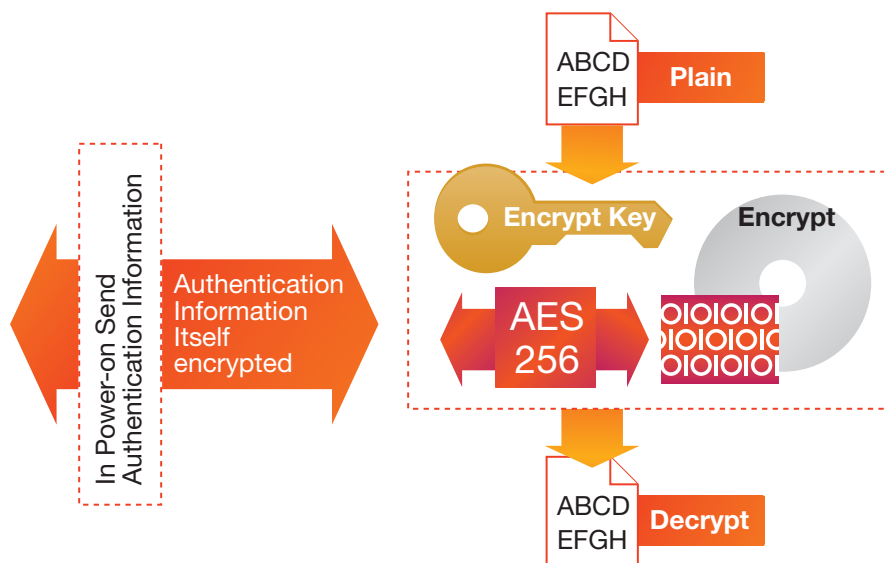
Toshiba MFPs offer the world's first Self-Encrypting Drives (SED) equipped with Toshiba's suite of security functions that bring an unsurpassed level of data protection to e-STUDIO MFPs.

Toshiba's Security Hard Disk Drive

Toshiba's new Self-Encrypting Hard Disk Drive now comes standard in e-STUDIO3040CSE/3540CSE/4540CSE. It improves data security and reduces the risk of leaks of sensitive information stored on the e-STUDIO4540CSE series.

This new technology allows users to determine a range of security settings, including invalidation of encryption keys and data invalidation when a drive is removed from its housing or connected to an unauthorized host system.

Unlike previous models, the HDD encryption is preformed by the HDD itself and not the controller. The encryption key is also securely stored on the HDD and not the controller.

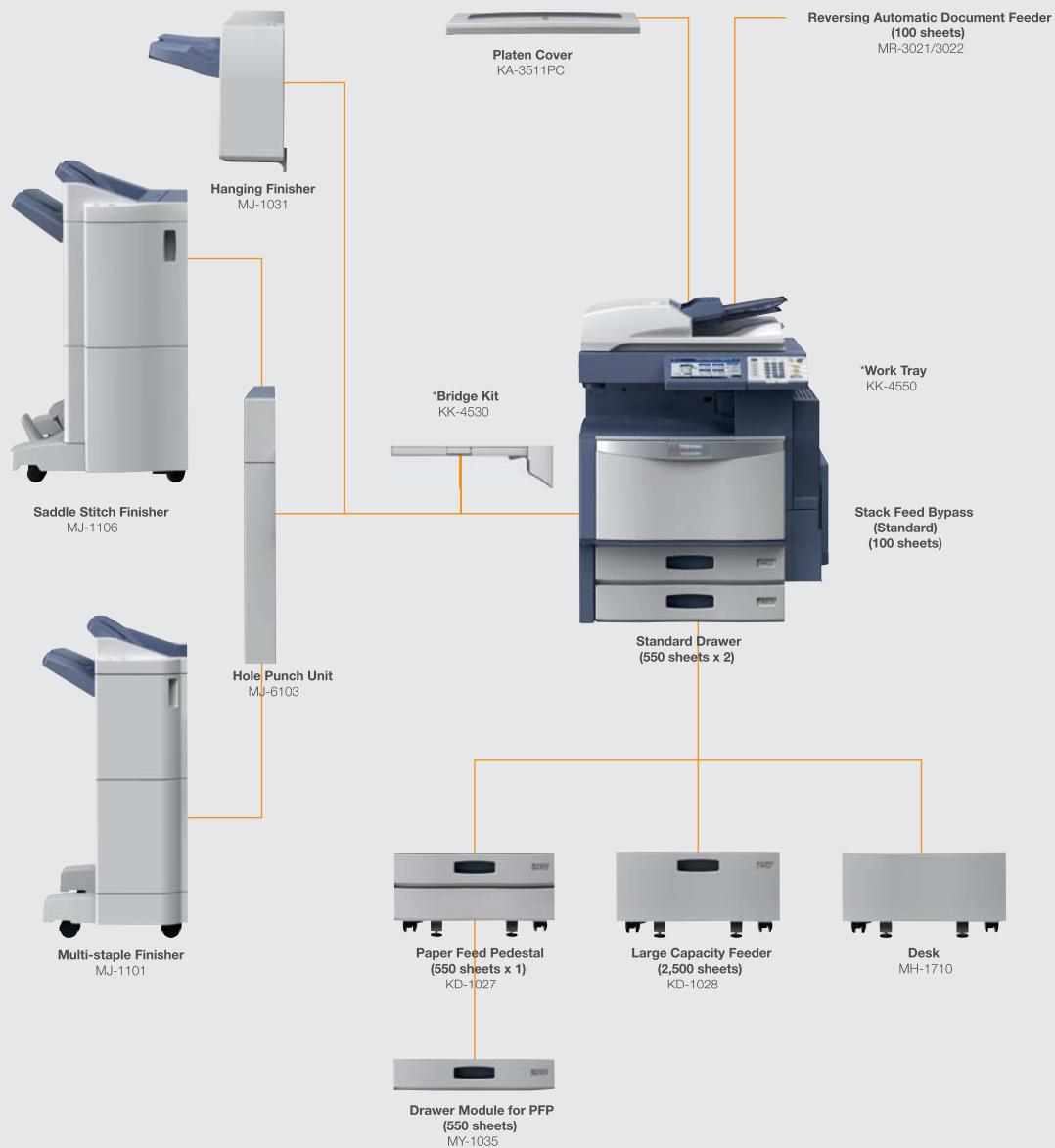


When the HDD is removed or stolen from the e-STUDIO4540CSE series and installed into another device, the HDD data is erased automatically. If the HDD is returned to the MFP without being installed into another device, data will not be erased and is accessible.

When a MFP is at the end of its lease or end of life, data can be instantly erased by the service technician.

OPTIONS

Drawing on a rich lineup of flexible options, you can easily, quickly and inexpensively perform bookbinding, binding and finishing tasks from the new e-STUDIO4540CSE series.



System Options

GA-1211EX
GD-1250
GD-1260
GN-1060
GN-3010
GP-1070

EFI Fiery Controller
FAX Unit
2nd Line for FAX Unit
Wireless LAN Module
Antenna for Wireless LAN
Data Overwrite Enabler

GP-1080
GP-1190
GQ-1110
GS-1010
GS-1020
KP-2004/2005

IPSec Enabler
Hardcopy Security Printing
Harness kit for Coin Controller
Meta Scan Enabler
External Interface Enabler
e-BRIDGE ID Gate

*Availability of Bluetooth Module and Wireless LAN Module may vary by region.

SPECIFICATION

General	
Copying Process	Indirect electrostatic photographic method
Copying Type	1 pass colour system
Max. Paper Capacity	With 80g/m ²
- Standard (1200 sheets)	Drawer 1 (550 sheets), Drawer 2 (550 sheets), Stack Feed Bypass (100 sheets)
- Max (3700 sheets)	Drawer 1 (550 sheets), Drawer 2 (550 sheets), Large Capacity Feeder (2500 sheets) Paper Feed Pedestal (550 sheets) Drawer for PFP (550 sheets)
Paper Size	Drawers: A3 to A5-R Automatic Duplex Unit: 305 x 457mm to A5-R Stack Feed Bypass: 320 x 460mm to A6, Banner (max 305 x 1200mm) Large Capacity Feeder: A4 Paper Feed Pedestal: A3 to A5-R
Paper Weight	Drawers: 64 - 256 g/m ² Stack Feed Bypass: 64 - 280 g/m ²
Memory Size	RAM: Main memory: 1GB, Page Memory: 512MB HDD: 80GB (Shared for all imaging functions)
Warm-Up Time	Approx. 160 seconds (e-STUDIO4550CSE) Approx. 89 seconds (e-STUDIO3040CSE/3540CSE)
Power Consumption	Max. 2.0kW (220-240V)
Reduction/enlargement	25% to 400% (Glass) 25% to 200% (RADF)
Dimensions	W699 x D742 x H759mm (with ADU and SFB)
Weight	Approx. 121 kg

Print Specifications	
Print Resolution	Printing: 600 x 600 dpi, 8 bit Scanning: 600 x 600 dpi
Print Speed	Colour: 30/35/45 ppm B&W: 30/35/45 ppm
Interface	Ethernet (10/100/1000BASE-TX), USB 2.0/High Speed USB Wireless LAN, IEEE802.11b/g (option)
Printer Language	PCL6 emulation, PostScript3 emulation, XPS
Protocols	TCP/IP(IPv4/v6), IPX/SPX, EtherTalk, NetBIOS over TCP/IP, NetBEUI
Drivers	Windows XP/Vista/7/Server 2003/2008/2008 R2 Mac OS X 10.2 to 10.6 UNIX, Linux

Copy Specifications	
Copy Resolution	Printing: 600 x 600 dpi, 8 bit (Full colour) Scanning: 600 dpi x 600 dpi (Colour & Mono)
Copy Speed	Colour: 30/35/45 ppm B&W: 30/35/45 ppm
First Copy Out Time	Colour: 8.4/8.4/6.8 seconds B&W: 6.5/5.2/5.2 seconds
Original Size	A3, A4, A4-R, A5-R, B4, B5, B5-R, Folio
Original Scan Speed	Colour: 45 spm B&W: 45 spm
Colour mode	Auto Colour, Black, Full Colour, Twin Colour, Mono Colour
Copy mode	Text, Photo, Text/Photo, Printed Image, Map, Image Smoothing

Scan Specifications	
Scan Resolution	100 dpi, 150 dpi, 200 dpi, 300 dpi, 400 dpi, 600 dpi
Scan Speed	Colour: 57 spm (300 dpi) B&W: 57 spm (300 dpi)
File Format (Colour)	B&W: TIFF, PDF, XPS Grayscale/Colour: JPEG, TIFF, PDF, Slim PDF, XPS Auto Colour: TIFF, PDF, XPS
Authentication	LDAP, SMTP, Windows Domain, Local

e-Filing Specifications	
Number of boxes	Public box: 1 User boxes: 200
Number of folders	100 per box
Number of documents	400 per box / folder
Number of pages	200 per document

Options	
Fax/Network-Fax	
Fax Unit (GD-1250)	
Fax Unit 2nd Line (GD-1260)	
Compatibility	Super G3, G3
Data Compression Method	JPEG, MMR, MR, MH
Transmission Speed	Approx. 3 seconds per page
Memory Transmission	Max. 400 destinations per job
Scan Speed	0.7 seconds/page (A4)
Covers	
RADF (Reversing Automatic Document Feeder)	100 sheets (A3, A4, 80g/m ²)
- MR-3021 (e-STUDIO2040C/2540C/3040C)	
- MR-3022 (e-STUDIO3540C/4540C)	
Platen Cover (KA-3511PC)	
Inner Trays	
Work Tray (KK-4550)	
Platen Cover (KA-3511PC)	
Finishers / Hole Punch Units	
- Hanging (MJ-1031)	
Tray Capacity: 1,000 sheets (A4, B5, A5-R, 80g/m ²)	
: 500 sheets (A4-R, B4, A3, B5-R, 80g/m ²)	
Staple Capacity: 50 sheets (A4, B5, 80g/m ²)	
: 30 sheets (A4-R, B4, A3, FOLIO, 80g/m ²)	
W411 x D594.5 x H383mm	
Dimensions	
- Multi-Staple (MJ-1101)	
- Tray Capacity	
Finishing Tray: 2000 sheets (A4, B5, A5-R, 80g/m ²)	
: 1000 sheets (A4-R, B4, A3, B5-R, FOLIO, 80g/m ²)	
Stationary Tray: 250 sheets (A4, B5, A5-R, 80g/m ²)	
125 sheets (A4-R, B4, A3, B5-R, FOLIO, 80g/m ²)	
Staple Capacity: 50 sheets (A4, B5, 80g/m ²)	
30 sheets (A4-R, B4, A3, FOLIO, 80g/m ²)	
W535 x D598 x H1092mm	
Dimensions	
- Saddle-stitch (MJ-1106)	
- Tray Capacity	
Finishing Tray: 3000 sheets (A4, B5, 80g/m ²)	
: 1500 sheets (A4-R, B4, A3, B5-R, FOLIO, 80g/m ²)	
Stationary Tray: 250 sheets (A4, B5, A5-R, 80g/m ²)	
125 sheets (A4-R, B4, A3, B5-R, FOLIO, 80g/m ²)	
Staple Capacity: 50 sheets (A4, B5, 80g/m ²)	
30 sheets (A4-R, B4, A3, FOLIO, 80g/m ²)	
Saddle-stitch capacity: 15 sheets (A3, B4, A4-R, 80g/m ²)	
W649 x D657 x H1086mm	
Dimensions	
Hole Punch Unit (MJ-6103E) for MJ-1101/1106	
Dimensions	
* Bridge Kit (KN-4530) is required for all finishers	
* Staple cartridge: STAPLE-2000, STAPLE-2400	
Drawers	
- Paper Feed Pedestal (KD-1027)	
550 sheets, A3 - A5-R, 64 - 256 g/m ²	
- Drawer Module (MY-1035)	
550 sheets, A3 - A5-R, 64 - 256 g/m ²	
- Large Capacity Feeder (KD-1028A4)	
2500 sheets, A4, 64 - 105 g/m ²	
- Desk (MH-1710)	
Document Capture/Workflow	
- Meta Scan Enabler (GS-1010)	
Information Communications Security	
- Harness Kit for Coin Controller (GQ-1110)	
- Harness Kit for Card Controller (GQ-1150)	
- Hardcopy Security Print Kit (GP-1190)	
- e-BRIDGE ID Gate (KP-2004 HID), (KP-2005 Mifare)	
- Data Overwrite Enabler (GP-1070)	
- IPSec Enabler (GP-1080)	
Communications Connections	
- Wireless LAN Module (GN-1060)	
- Antenna (GN-3010)	
- External Interface Enabler (GS-1020)	
- EFI Fiery Controller (GA-1211EX)	

Microsoft and Windows[®] are registered trademarks of Microsoft Corporation in the United States and/or other countries.
Adobe[®] PostScript[®] Level 3[™] is a registered trademark of Adobe Systems, Inc.
Mac OS[®] is a registered trademark of Apple Inc.
All other brand and/or product names are trademarks of their respective owners.

All specifications relevant to paper capacity, productivity and others relating to paper refer to A4 size paper of 80g/m² (LT size paper of 20 lbs) quality if not otherwise mentioned.
This brochure was compiled based on information that was accurate prior to product launch. Product design and specifications are subject to change without notice. The colour(s) of the actual product may vary from the colour(s) shown in this brochure. No part of this material may be used or reproduced in any manner whatsoever without permission. 1GB is equivalent to 1 billion bytes. Days for function availability may differ by region. e-filing[®] is an abbreviation of "electronic filing". Warm-up time and print speed may vary depending on the operating environment. ©2011 TOSHIBA TEC CORPORATION All rights reserved.

As an ENERGY STAR Partner TOSHIBA TEC CORPORATION has determined that this multifunction device model meets the ENERGY STAR guidelines for energy efficiency.

Information is correct at the point of printing.

Distributed by

Driven by



TOSHIBA

TOSHIBA SINGAPORE PTE LTD

438B Alexandra Road, #06-01, Alexandra Technopark
Singapore 119968

Tel: (65) 6516 0380

Fax: (65) 6516 0381

www.estudio.com.sg

Version 2.0 TSP